





*The Best of Everything  
is Right at Home*



Our homes were designed with your dreams in mind. Casual, elegant living spaces will inspire daily connection, special celebrations and a lifetime of happy moments. Covered outdoor rooms expand indoor/outdoor entertaining spaces, plus innovative Connected Home technology makes every Marigold home beautifully efficient.

Life at New Haven is action packed so you can be social, get outdoors and make a splash. Private leisure and recreational amenities are perfect for relaxing with friends, hosting a picnic and enjoying community events. It's all here, and it's all yours. Welcome to the neighborhood.

**A GOLDEN OPPORTUNITY FOR  
HOMEOWNERSHIP IN NEW HAVEN**



## RESIDENCE 3

Approx. 3,105 Sq. Ft. • 4-5 Bedrooms Including First Floor Bedroom  
3 Baths • Expansive Great Room • Formal Dining • Nook  
Upstairs Bonus Room • Covered Outdoor Room • 2-Car Garage with Direct Access  
Optional 2-Car Garage with Super Storage at Bedroom 4 • Optional Bedroom 5 at Bonus Room



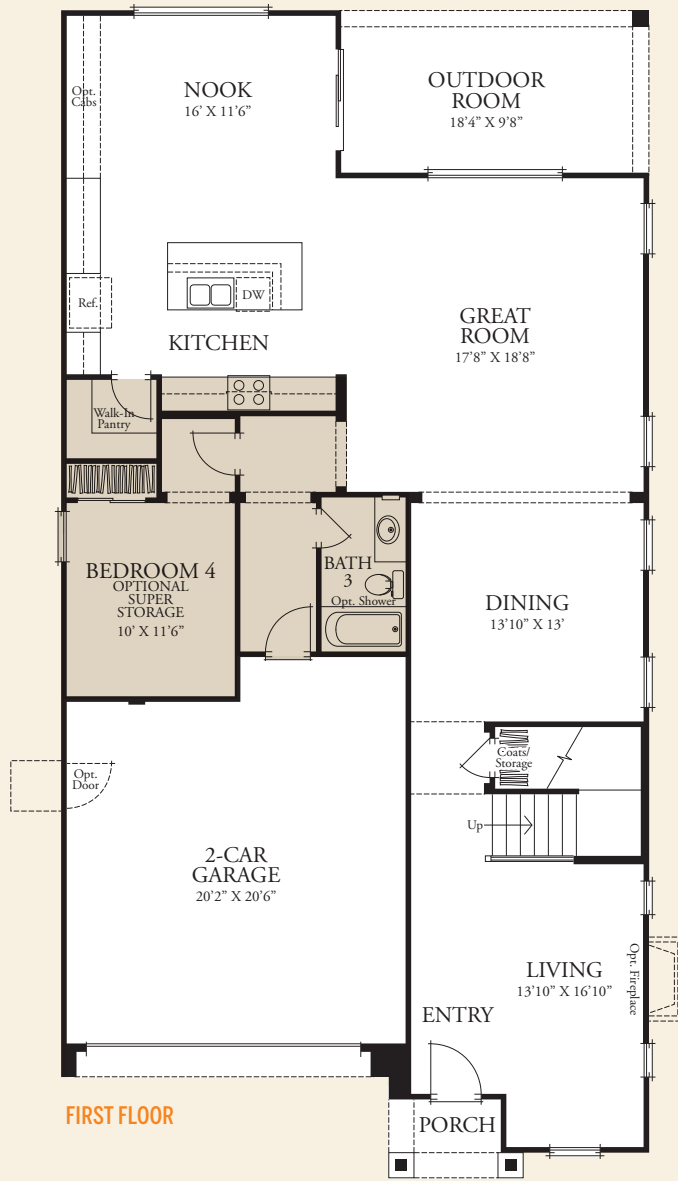
3A - COTTAGE



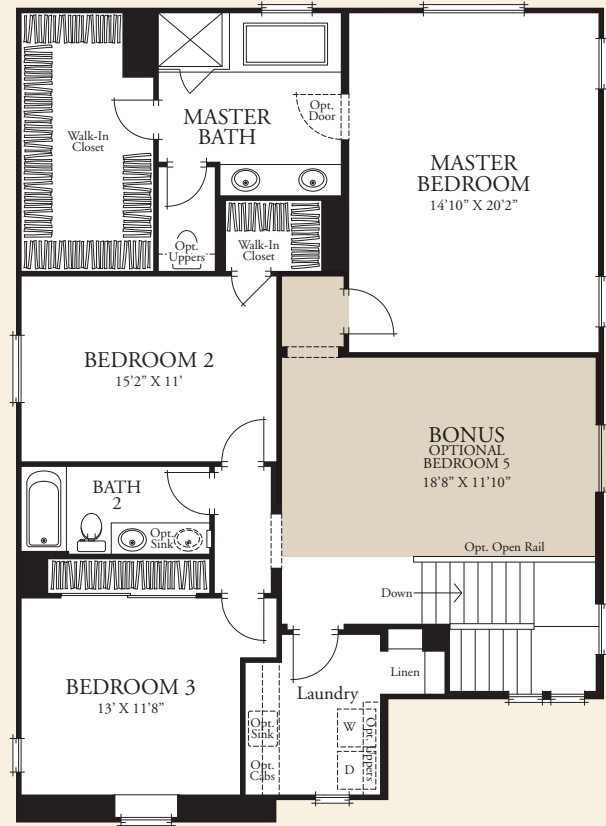
3B - AMERICAN FARMHOUSE (AS MODELED)



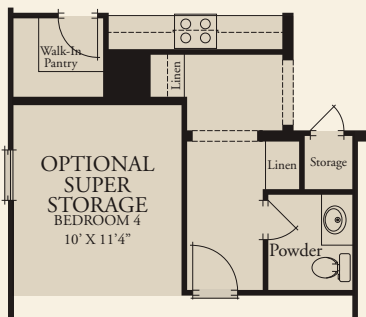
3C - SPANISH COLONIAL



**FIRST FLOOR**



**SECOND FLOOR**



**OPTIONAL 2-CAR GARAGE WITH SUPER STORAGE/POWDER AT BED 4/BATH 3**



**OPTIONAL BEDROOM 5 AT BONUS ROOM**



## RESIDENCE 2

Approx. 2,792 Sq. Ft. • 4-5 Bedrooms Including First Floor Bedroom  
3 Baths • Expansive Great Room • Formal Dining Room • Launch  
Upstairs Bonus Room • Covered Outdoor Room  
2-Car Garage with Direct Access • Optional Bedroom 5 at Bonus Room



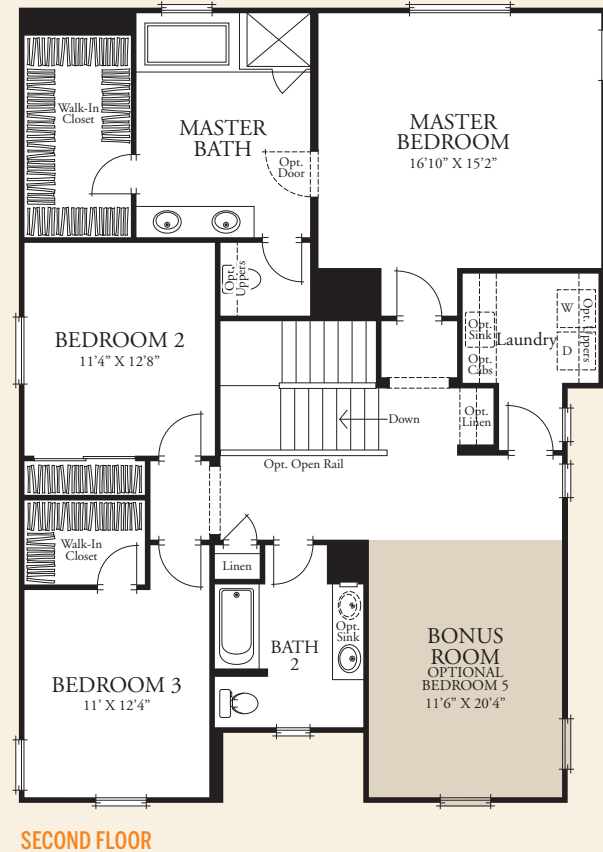
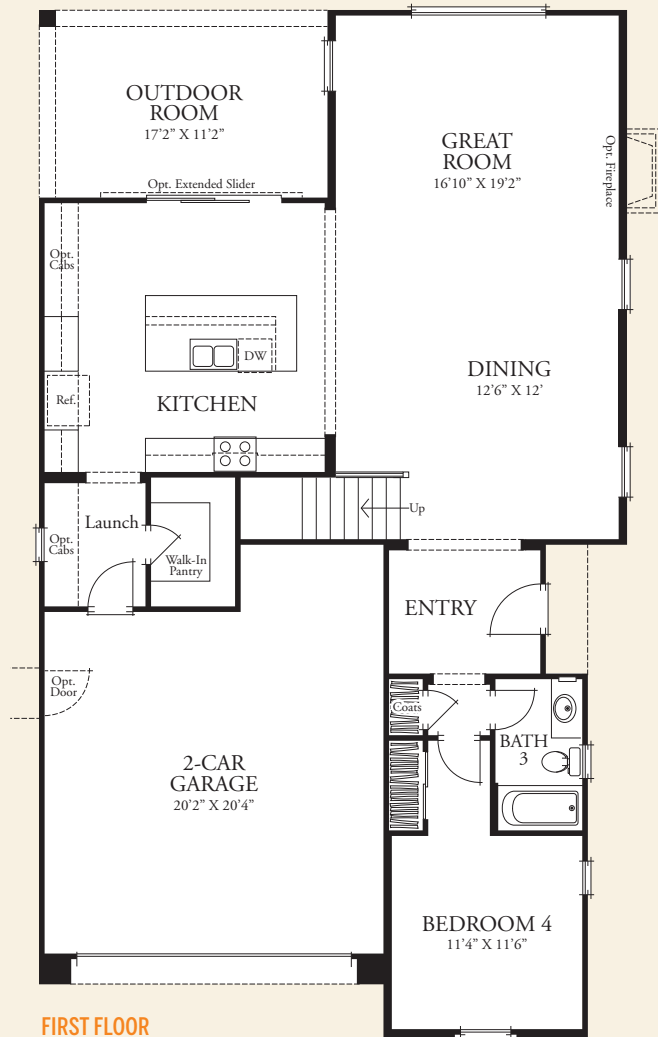
2A - COTTAGE (AS MODELED)



2B - AMERICAN FARMHOUSE



2C - SPANISH COLONIAL



\*Private yard and patio spaces vary by location. All square footage is approximate. Renderings are artist conception. Floorplans, decks, windows and doors vary by elevation. Stated dimensions are approximate estimates and not intended for space planning purposes. See Brookfield representative for details.



# RESIDENCE 1R

Approx. 2,608 Sq. Ft. • 4 Bedrooms Including First Floor Bedroom  
3 Baths • Expansive Great Room • Formal Dining • Upstairs Bonus Room  
Covered Outdoor Room • 2-Car Garage with Direct Access



1AR - COTTAGE

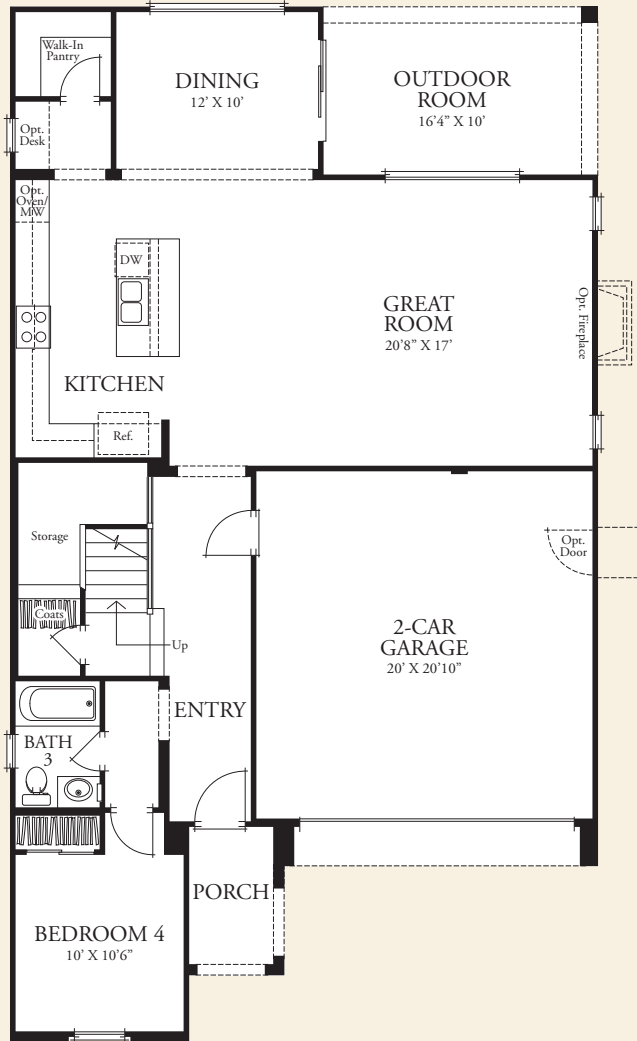


1BR - AMERICAN FARMHOUSE

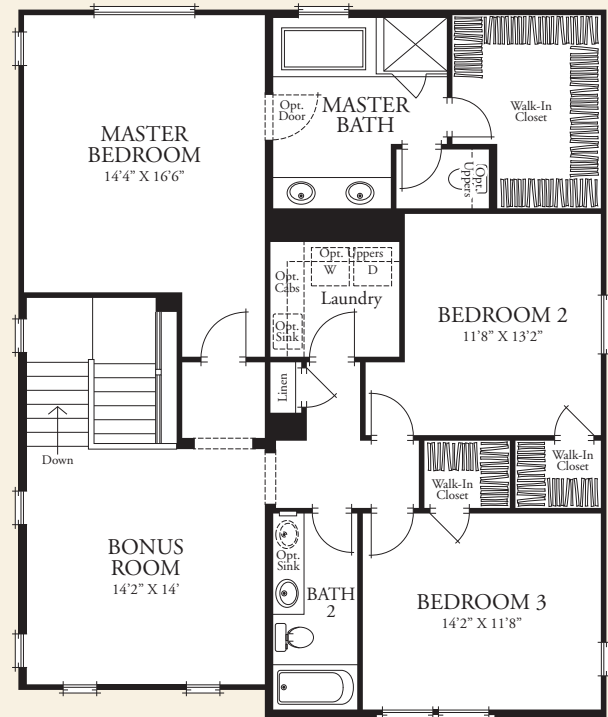


1CR - SPANISH COLONIAL (AS MODELED)





**FIRST FLOOR**



**SECOND FLOOR**

# Creating the Best Places to Call Home

Brookfield Residential Southern California Los Angeles a division of Brookfield Residential, is committed to being more than a homebuilder. We strive to create the best places to call home. The Brookfield Residential Southern California Los Angeles team has the passion, the expertise and the local knowledge to craft homes and neighborhoods that speak to homebuyers at every stage of life. We are an award-winning homebuilder and industry leader with an exceptional reputation for quality, design, and customer service.

Brookfield Residential Properties Inc. is a leading land developer and homebuilder in North America. We entitle and develop land to create master-planned communities, sell lots to third-party builders, and operate our own home building division. We also participate in select, strategic real estate opportunities, including infill projects, mixed-use developments, and joint ventures.

[BROOKFIELDRESIDENTIAL.COM](http://BROOKFIELDRESIDENTIAL.COM)

AUSTIN

CALGARY

DENVER

EDMONTON

HAWAII

KANSAS CITY

LOS ANGELES

PHOENIX

SACRAMENTO

SAN DIEGO

SAN FRANCISCO

TORONTO

WASHINGTON DC



# INCLUDED FEATURES

## BEAUTIFUL EXTERIORS

- A delightful street scene comprised of Cottage, American Farmhouse and Spanish Colonial-inspired architecture
- Covered outdoor rooms will expand your indoor/outdoor living experience
- Inviting and low-maintenance 8' doors in painted finish with matte black hardware
- Embellishing architectural details include decorative exterior shutters, stone veneer, brick veneer and/or decorative tile (varies per elevation)
- Decorative exterior light fixtures (varies by elevation) and illuminating address plates
- Attached, fully dry-walled 2-car garages with steel sectional roll-up doors include (2) three-button transmitters
- Decorative entry gate at Residence Two (varies per elevation)

## BRIGHT LIVING SPACES

- 13" x 13" ceramic tile flooring in entry and vinyl flooring in kitchen, all baths and laundry room
- Decorative door casings and baseboards throughout
- Two-panel interior doors with Schlage® door hardware in matte black finish
- Spacious master bathrooms feature luxurious soaking tub with 6" x 6" white ceramic tile surround, ceramic tile walk-in showers with ¼" frameless glass enclosure, elongated toilet, cultured marble countertops with 4" backsplash and dual Gerber® china sinks with Delta® Ashlyn® 8" widespread faucets in polished chrome finish
- Secondary bathrooms feature cultured marble countertops with 4" backsplash, Gerber® undermount sink with Delta® Ashlyn® faucet in polished chrome finish and optional second sink
- Convenient laundry rooms feature gas dryer hook-up, optional cabinetry and optional sink

## MODERN KITCHENS

- Stainless steel Whirlpool® appliance package includes:
  - 30" gas range with 4 burners and single oven
  - 30" built-in microwave/hood above range
  - Multi-cycle dishwasher
- European-style, white thermofoil cabinetry with raised panel doors, adjustable shelves, easy-clean white laminated interiors, smooth-glide drawers and brushed nickel knobs
- Granite countertops with 6" backsplash and full splash behind cooktop available in three colors: New Caledonia, Pebble Beach or Juparana St. Cecelia
- Stainless steel Mainline® double-basin kitchen sink with Delta® single-control pullout faucet in arctic stainless finish and food waste disposal
- Convenient roll-out trash & recycling cabinet with two bins
- Spacious walk-in pantry with shelving

## TECHNOLOGY & ENERGY EFFICIENCY

- QuietCool® whole house fan system improves upon the principle of ventilation cooling with savings of up to 50% - 90% off traditional cooling methods such as A/C
- Pre-wire for optional solar panels
- Technology pre-wiring with Category 6 data to allow for phone lines and high-speed data connections with advanced video distribution capabilities in great rooms.
- USB outlets in kitchen and master bedroom offer convenient ways to charge your device
- Modern tankless water heater with direct vent includes hot water recirculation pump with convenient push buttons at master bath and kitchen to activate hot water
- Photocell with astronomical time clock for exterior coach lights to allow for efficient lighting from dusk to dawn
- Dual zoned HVAC systems with Wi-Fi compatible Honeywell® Lyric thermostat

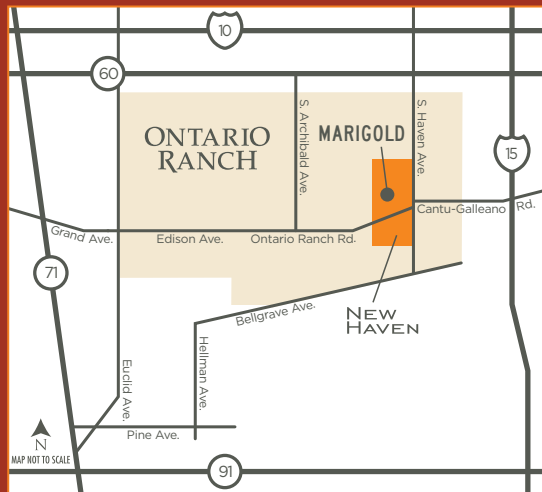
## PERSONALIZE YOUR HOME

With the guidance of the Brookfield Studio design professionals, you may choose from a host of optional upgrades to personalize your new home, including flooring, countertops, cabinetry, appliances, electrical and audio visual, and staircase and finish carpentry to make your home uniquely yours.



## CONNECTED HOME

Your new home features the latest home automation products such as Schlage® Sense Bluetooth enabled front door lock, Lutron® light switches (select locations), wireless access point (WAP) for enhanced wireless connectivity and Honeywell® Lyric T6 thermostat. These products work with the Apple® HomeKit app in iOS and offer a simple, secure and convenient way to control your home from anywhere.



3972 S. Alexander Avenue  
Ontario Ranch, CA 91761

800.610.8858

[BROOKFIELDRESIDENTIAL.COM](http://BROOKFIELDRESIDENTIAL.COM)

**NEW HAVEN**  
Ontario Ranch



Plan, pricing and product information subject to change. All square footage is approximate. Renderings are artist conception. Windows, decks and doors vary by elevation. Stated dimensions are approximate estimates and not intended for space planning purposes. Models do not reflect racial preference. See Brookfield representative for details. Copyright ©2018 Brookfield Residential. All Rights Reserved. CalBRE License #01896289. 1/2018

**Brookfield**  
Residential