



MATARO

AT *Glen Loma Ranch*

Glen Loma Ranch in Gilroy is a special kind of community development with 17 distinct neighborhoods connected by natural open spaces, extensive planned walking trails and numerous proposed neighborhood parks.

6601 Lopez Lane
Gilroy, CA 95020
P. 408-713-3138 | F. 408-709-7108
BrookfieldNorCal.com

**Brookfield
Residential**

Preliminary and subject to change. Brookfield Residential reserves the right to change floor plans, elevations, specifications, materials, colors, features or sales prices without prior notice. Such changes may not always be reflected in our model homes. All renderings, floor plans and handouts are artist's conceptions and are not intended to be an actual depiction of the buildings, walks, driveways or landscaping. Window locations and sizes may vary per plan and elevation. Square footages are approximate. Models do not reflect racial preference. Ask your sales representative for details. CalBRE license no. 01996804. 8/16 🏠



MATARO
AT *Glen Loma Ranch*



MATARO

AT *Glen Loma Ranch*

Ideally located within the relaxing Glen Loma Ranch master-planned community, Mataro will be the place to enjoy life's simple pleasures. From wide open spaces to peaking foothills, the community's natural surrounds create the finest recipe for leisure. Here, new homes feature spacious floor plans that make room for every ambition, while comfortable amenities and attractive designs fit every style. In addition to the spectacular selection of homes, residents will have access to nearby schools, walking trails, parks and lush open spaces.

RESIDENCE 1

- Approx. 3,294 Square Feet
- Two-Story
- 4 Bedrooms
- 3.5 Baths
- Loft
- Formal Dining Room
- 3-Car Garage
- Optional Den
- Optional Bedroom 5 with Bath 4
- Optional Outdoor Room
- Optional Outdoor Deck



ELEVATION 1A :: MODELED



ELEVATION 1B



ELEVATION 1C



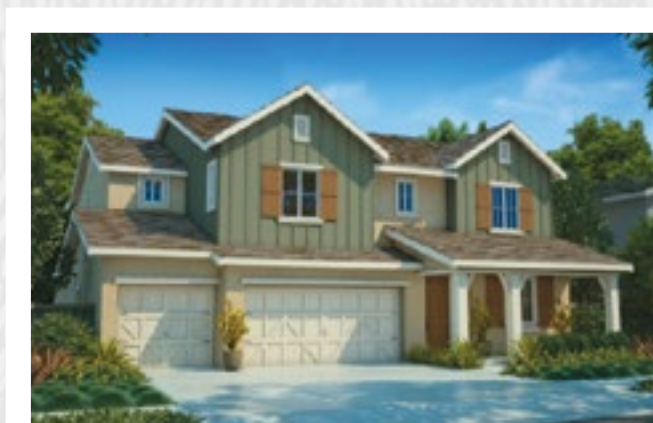
Preliminary and subject to change. Brookfield Residential reserves the right to change floor plans, elevations, specifications, materials, colors, features or sales prices without prior notice. Such changes may not always be reflected in our model homes. All renderings, floor plans and handouts are artist's conceptions and are not intended to be an actual depiction of the buildings, walks, driveways or landscaping. Window locations and sizes may vary per plan and elevation. Square footages are approximate. Models do not reflect racial preference. Ask your sales representative for details. CalBRE license no. 01996804. 8/16

RESIDENCE **2**

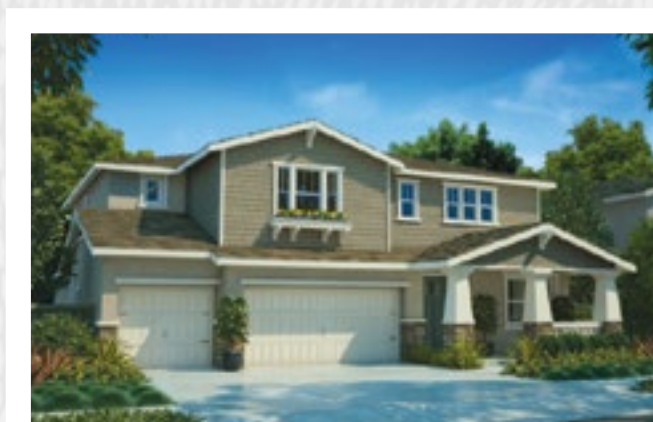
- Approx. 3,539 Square Feet
- Two-Story
- 4 Bedrooms
- 4.5 Baths
- Office
- Loft
- 3-Car Garage
- Optional Bedroom 5
- Optional Outdoor Room
- Optional Outdoor Deck



ELEVATION 2A



ELEVATION 2B :: MODELED



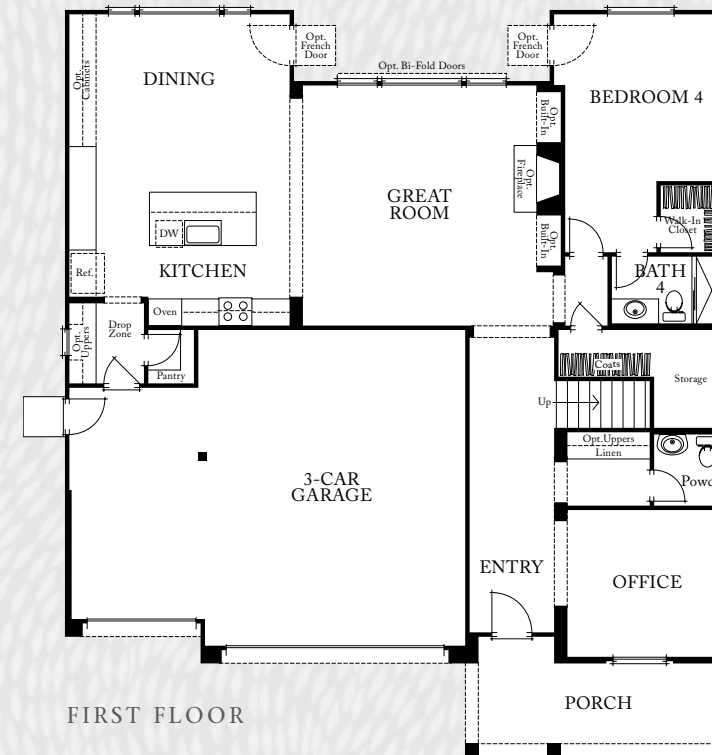
ELEVATION 2C



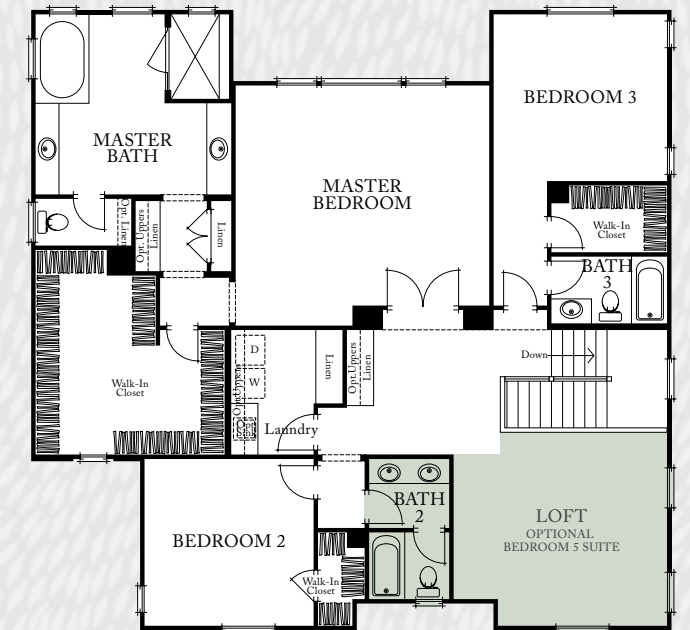
Optional Outdoor Room



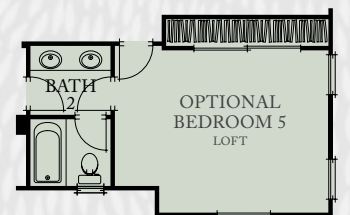
Optional Outdoor Deck



FIRST FLOOR



SECOND FLOOR



Optional Bedroom 5

Preliminary and subject to change. Brookfield Residential reserves the right to change floor plans, elevations, specifications, materials, colors, features or sales prices without prior notice. Such changes may not always be reflected in our model homes. All renderings, floor plans and handouts are artist's conceptions and are not intended to be an actual depiction of the buildings, walks, driveways or landscaping. Window locations and sizes may vary per plan and elevation. Square footages are approximate. Models do not reflect racial preference. Ask your sales representative for details. CalBRE license no. 01996804. 8/16

RESIDENCE
3

Approx. 3,708 Square Feet
Two-Story
5 Bedrooms
4.5 Baths
Loft
Formal Dining Room
3-Car Garage
Optional Outdoor Room
Optional Outdoor Deck



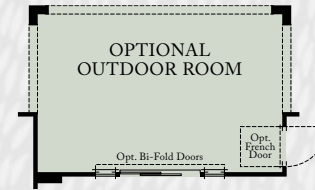
ELEVATION 3A



ELEVATION 3B



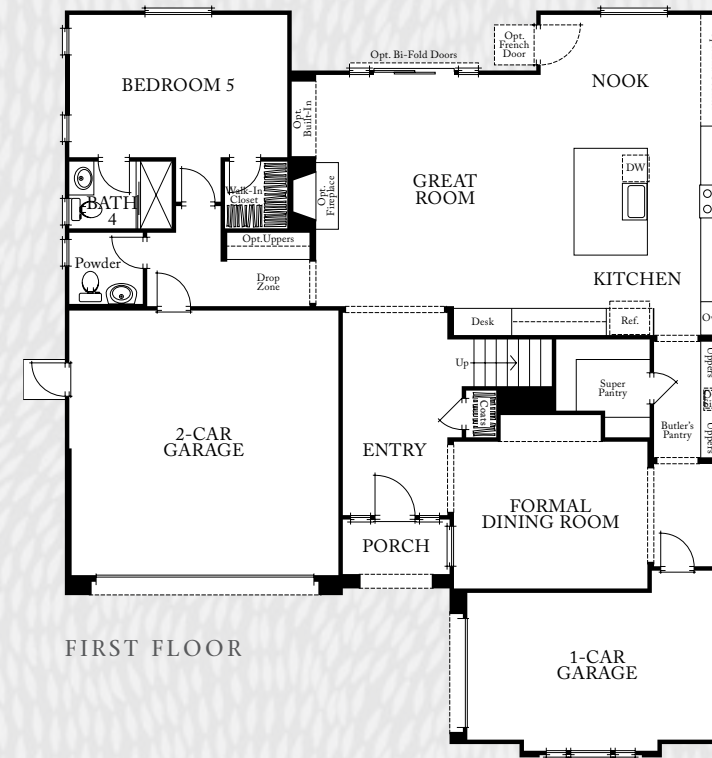
ELEVATION 3C :: MODELED



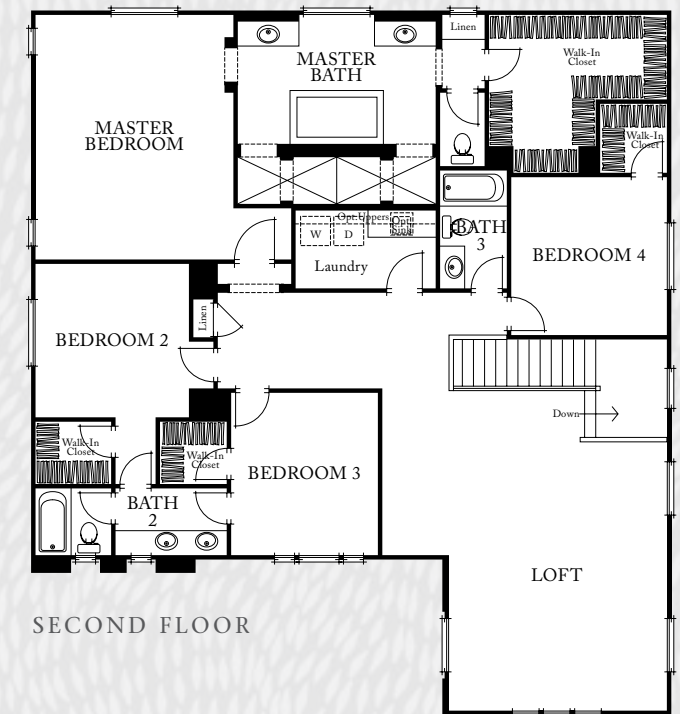
Optional Outdoor Room



Optional Outdoor Deck



FIRST FLOOR



SECOND FLOOR



Preliminary and subject to change. Brookfield Residential reserves the right to change floor plans, elevations, specifications, materials, colors, features or sales prices without prior notice. Such changes may not always be reflected in our model homes. All renderings, floor plans and handouts are artist's conceptions and are not intended to be an actual depiction of the buildings, walks, driveways or landscaping. Window locations and sizes may vary per plan and elevation. Square footages are approximate. Models do not reflect racial preference. Ask your sales representative for details. CalBRE license no. 01996804. 8/16

FEATURES & AMENITIES

Delicious Kitchens

- GE Profile™ 36” five-burner gas cooktop
- GE Profile™ 36” hood
- GE Profile™ 30” built-in microwave oven
- GE Profile™ ENERGY STAR®-rated dishwasher
- Granite slab countertops with laminated eased edge
- Beechwood Sierra-style cabinetry in three stained finish choices with concealed European hinges and easy-care adjustable shelving
- Convenient water line to refrigerator for ice maker
- 12” x 12” tile flooring throughout kitchen
- Stainless steel, single-compartment undermount sink
- Delta® pullout spray faucet in chrome finish
- InSinkErator Badger® one-half horsepower food waste disposal
- Easy-access air switch at island sink locations for food waste disposal
- Gourmet islands designed to fit your needs

Gracious Living Area

- 12” x 12” tile flooring at entries
- Striking Leviton® Decora® switches throughout in pristine white
- Interior two-panel doors, 3¼” baseboard and 2¼” casings (per residence)
- Baldwin® knob handlesets in designer-selected finish
- Transitional white stair railings with sturdy square balusters

Heavenly Bath Havens

MASTER BATHS

- Delta® single-control chrome faucets
- Luxurious Kohler® rectangular white soaking tub
- Solid-surface Marblestone™ vanity with rectangular undermount sinks
- Solid-surface Marblestone™ tub surround
- Shower with tile surround and corner shampoo shelves and convenient seat bench (per residence)
- ¼” glass shower enclosure with flat handle and header
- Frameless mirror(s) with polished edge, full length of vanity
- Designer-selected light fixtures

SECONDARY BATHS

- Delta® 4” center-set faucets in chrome finish
- Convenient solid-surface Marblestone™ vanities
- Recessed, frameless medicine cabinets (per residence)
- Frameless beveled mirror full width of vanity
- Designer-selected light fixtures

POWDER BATHS

- Delta® 4” center-set faucets in chrome finish
- Convenient solid-surface Marblestone™ vanities (per residence)
- Designer-selected light fixtures
- ¾” frameless glass shower enclosure with flat handle and header (per residence)
- Rectangular mirror with beveled edge

Construction Enhancements & Energy-Efficient Features

- Your Brookfield home is built to California Title 24 compliance standards, including third-party inspections
- Engineered post-tension slab foundation
- Engineered open-web floor trusses
- Tankless water heater maintains water temperature

- Complete three-coat stucco system
- Engineered roof and second-floor trusses
- Radiant barrier roof sheathing provided to deflect heat and keep energy costs down
- Energy-efficient, dual-glazed Low-E glass windows with white vinyl frame and designer grids (per residence and elevation)
- High-efficiency faucets, showerheads and toilets save money on energy costs
- Energy-efficient 14 SEER dual-zone air conditioning and forced-air heating with programmable thermostat for maximum comfort and efficiency

Many Extras You’ll Appreciate

- Distinctive exterior elevations, featuring cultured stone and brick (per residence) add variety
- Architecturally controlled exterior color schemes
- Eagle® concrete tile roofing
- Therma-Tru® 8’ raised-panel fiberglass entry door with Baldwin® knob handleset
- Low-voltage wiring includes:
 - Media/data dual outlet included at great room, master bedroom and loft/bonus room
 - USB outlet included at first- and second-floor linens (per residence)
- Laundry equipped with gas stub for dryer
- Solid-surface countertops at laundry
- Steel garage door with LiftMaster® belt-drive garage door opener
- Sheetrocked, taped and painted garage interiors
- Overhead 4’ fluorescent lighting at garage
- Carbon monoxide detector at first and second floor (per code)
- Smoke detectors and fire sprinklers throughout (per code)
- Complete front yard landscaping with automatic irrigation
- Designer-selected exterior carriage lights (per residence and per elevation)
- Low-VOC interior wall and ceiling paint
- Distinctively illuminated address numbers



CUSTOMIZE YOUR HOME

To help customize your new Mataro home, we invite you to visit our Design Center located in Dublin, CA. Please see your sales representative for details.